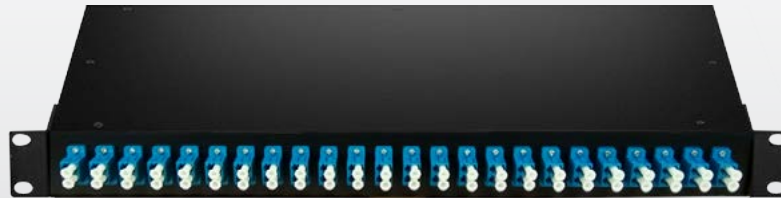


Patch Panel



Starview 19-inch Rack-mount Fiber Optic Distribution Frame for FC,SC,ST,LC adapters. The enclosure is constructed of steel material and its front panel is designed to easily remove for cabling and connector installation.

Features

- Standard size, light weight and reasonable structure
- Compact design for space saving
- Front mark on the plate is easy for identification and operation
- Easy for management and operation
- Supports Multimode and Singlemode fiber splitting
- Wide Operating Temperature:
- From -40°C to 85°C
- High Reliability and Stability

Applications

- Transition from Backbone cabling to distribution switching
- Interconnect to active equipment in server cabinet
- Cross connect or inter-connect

Specifications

Type	Dimension	Max capacity	Remark
Drawer type 19" rack mounted	430mmx300mmx1U	SC/FC/ST 12	Cold rolled steel sheet, with electrostatic spraying, - suitable for FC,SC,ST,LC adapters. IP grade: IP20 ; compliant: ROHS
	430mmx300mmx1U	FC/ST 24	
	430mmx300mmx1U	2SC 48	
	430mmx300mmx2U	FC/ST 48	
	430mmx300mmx4U	2SC 144	

Ordering Information

Example:
CHASSIS-24SCUS-19R

Drawer type patch panel with 24 x SC simplex adapter, 19" 1RU Rack w/o pigtails.

- Type: Drawer type patch panel
- Cores: 12;24;48;96;
- Connector Type: SC:SC; FC:FC; ST:ST; LC:LC;
- Polishing Grade: U:UPC; A:APC
- Fibre Type: SM: Singlemode
MM: Multimode
- 19-inch Rack-mount
Fiber Optic Distribution Frame

