

# Cables

---



- Available with various optical connectors, i.e. LC, SC, FC, E2000, ST and APC or UPC type
- Bend-Insensitive Fiber with 2mm or 3mm type diameter
- Available with simplex and duplex fiber types include OM3/ OM4 multimode 50/125 $\mu$ m and Singlemode 9/125 $\mu$ m
- Factory terminated and 100% tested
- Individually packaged with test results included



LC APC 2mm



LC UPC 900µm



SC APC 2mm



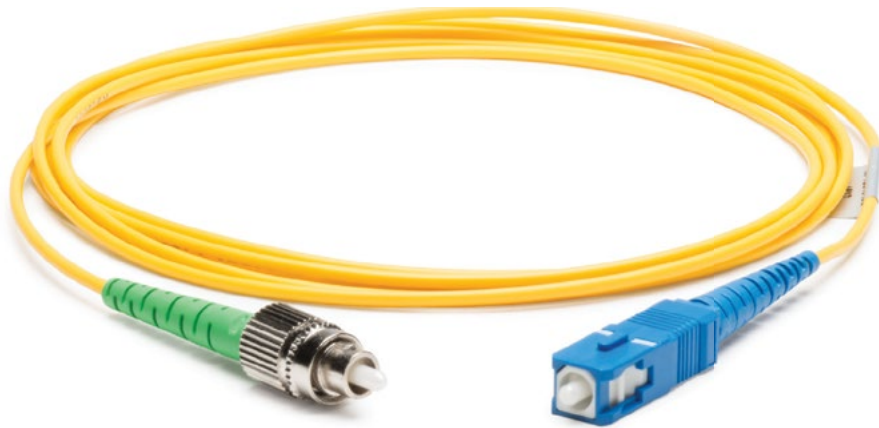
SC UPC 900µm



FC APC 2mm



FC UPC 900µm



SVI Patch cord using the highest grade connector available. They are used for referencing and for mass-production

## Features

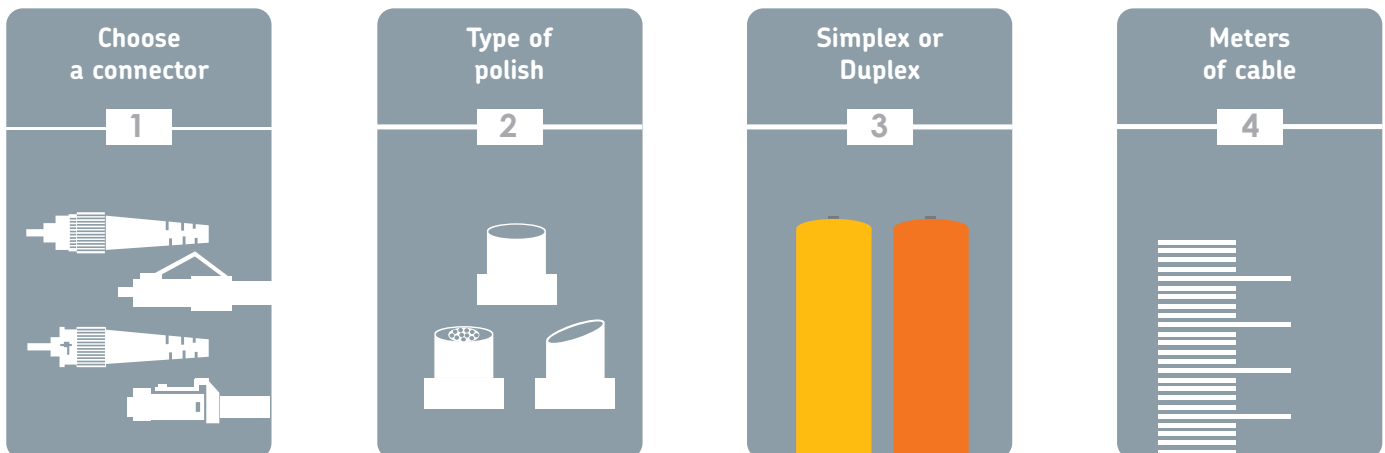
- Compliant with: IEEE 802.3u, IEC 60794, TIA/EIA-568.B.3
- Optical performance 100% factory tested.
- Standard lengths of SC and FC, ST assemblies in stock.
- Customized assemblies are available in a variety of lengths, connector styles and performance.
- Precision ceramic ferrule with end face geometry per IEC proposal.

## Applications

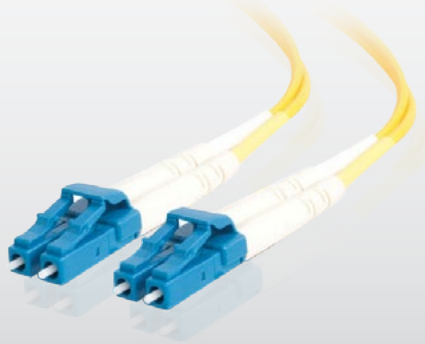
- Telecommunications network
- Active device termination
- CATV networks
- Local area networks

# How to choose optical fiber patch cord

The Optical Fiber Patch cord is available for any kind of configurations you need.



# Duplex Single Mode Patch Cord



## Features

- Different type of terminations SC to ST, LC to FC, etc.
- ANSI/TIA/EIA-568.B.3 compliant
- 9/125µm Singlemode Riser
- 2mm, and 3mm Simplex / Duplex
- IEEE 802.3u, IEC 60794, TIA/EIA-568.B.3 compliant
- Electric interference immune
- Fibers offers low insertion loss once joined to connector
- Telcordia GR-326 tested
- Lab connectorized, each jumpers includes a quality certificate to state measuring standards

## Specifications

Norms and Standards	Telcordia GR-326, IEEE 802.3u/802.3x/802.3z/802.3j, IEC 60794, TIA/EIA-568.B.3		
Fiber Jacket	Diameter	3mm ± 0.05mm	2mm ± 0.05mm
	Thickness	0.80mm ± 0.80mm	0.60mm ± 0.50mm
	Temperature	-20°C up to 85°C	
Fiber optic	Core diameter	Fiber: 9/125µm	Value: ± 0.70mm
	Cladding diameter	125.0 ± 2.0µm	
	Core concentricity	≤ 1.5µm	
	Cladding concentricity	≤ 1.0%	
	Wavelength	Single mode:	1310 nm
	Maximum value	dB/Km	≤ 0.4      ≤ 0.3
	Recommended Light source	Single mode:	Laser

## Ordering Information

**Example:**

**SV-CORD-LCULCU-SM1MD2**

Starview Fber Patchcord with LC/UPC to LC/UPC connector.  
Singlemode 9/125um 1 meter Duplex with type 2mm bend-insensitive fiber

- Manufacturer: Starview International
- Type: Optical Fber Patchcord
- Connector Type #1: SC:SC; FC:FC; ST:ST; LC:LC;
- Polishing Grade #1: U:UPC; A: APC
- Connector Type #1: SC:SC; FC:FC; ST:ST; LC:LC;
- Polishing Grade #1: U:UPC; A:APC
- Fiber Type: SM: Singlemode  
MM: Multimode
- Length: (m) 1-99 M
- Cord Type: S: Simplex Type  
D: Duplex Type
- Cord Diameter: (mm) 2; 3;

